

Shape the Future: Inclusive Leaders Summit!

March 5–6 Milwaukee Wisconsin

About the Summit

Join us for an inspiring 2-day In-Person Summit in Milwaukee, Wisconsin, from March 5th to 6th, as we gather to explore innovative strategies and cutting-edge tools that will empower Diversity, Equity, and Inclusion (DEI) Leaders to shape the future. By attending the Inclusive Leaders Summit, you will develop a future-forward mindset, while building strong connections with other like-minded professionals in the field.

Who is it for?

Diversity, Equity, and Inclusion (DEI) Leaders, along with those responsible for spearheading DEI initiatives. This includes HR, Employee Resource Groups, and Affinity Group leaders who play a crucial role in fostering a more inclusive and equitable environment within organizations and communities. These dedicated professionals, agents of change, or DEI champions work tirelessly to promote awareness, understanding, and acceptance of diverse perspectives at all levels of the organization, thus nurturing a culture that celebrates differences and values each individual's unique contributions.



The Topics

Our highly-interactive sessions, led by esteemed industry experts, delve into five essential areas that are crucial to the success of DEI initiatives.



**The Time
Crisis in DEI**



**Building
Resourcefulness**



Unifying Visions



Storytelling



Managing Power

Schedule

- Monday: Builder Banquet: A Celebration of Hope and Leadership (Monday Invite Only)
- Tuesday: Day One 8:00–5:30 (Breakfast/Lunch Included; Optional Dinner)
- Wednesday: Day Two 8:00–3:45 (Breakfast/Lunch Included)



The Takeaways

Learn how the lack of time contributes to burnout among DEI leaders and discover **effective time-management techniques** to enhance personal resilience and productivity.

Uncover resourceful strategies for **maximizing DEI impact with limited resources**.

Allow your creativity to flow as you explore **unique solutions that enable you to do more with less**.

Master the art of optimizing DEI strategies for greater impact by **aligning team objectives with organizational goals**.

Learn how to create a **cohesive and unified vision** to accelerate change.

Discover the profound power of storytelling and learn how to **package your vision in a way that inspires others**.

Unlock the keys to captivating hearts and minds to build a deep and lasting commitment to diversity, equity, and inclusion.

Become adept at leading across the organization by **navigating power dynamics** that exist at every level.

Develop **techniques for effective collaboration, communication, and negotiation** to advance your DEI initiatives with success.



Our Venue

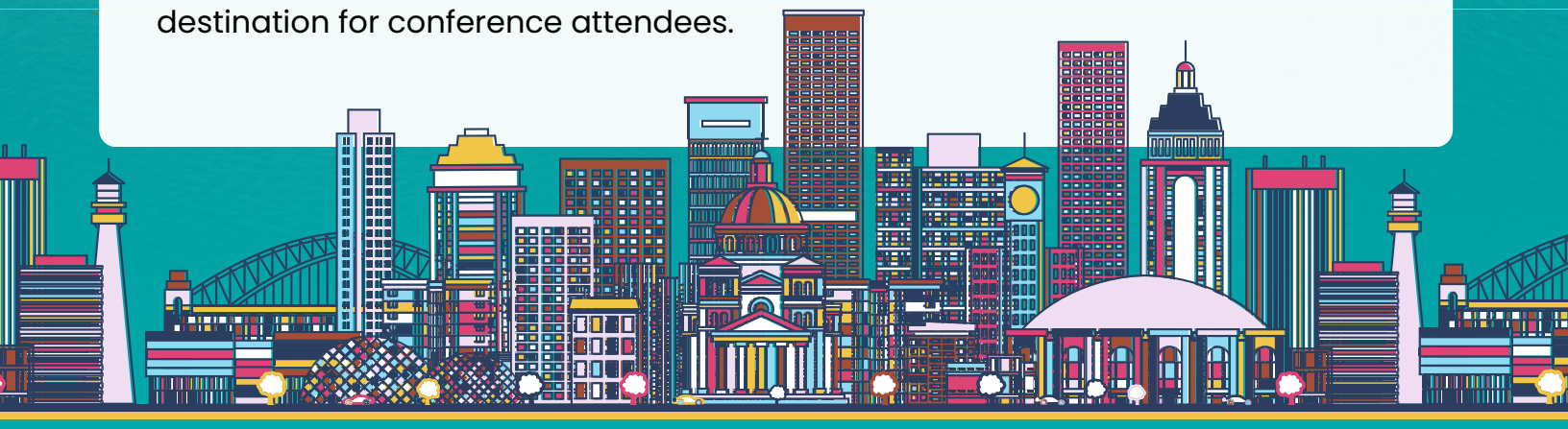
Saint Kate, located in the vibrant heart of Milwaukee, stands out as an extraordinary hotel with a unique blend of art, culture, and luxury accommodations. This elegant boutique hotel has garnered a reputation for its exceptional guest experience, characterized by its avant-garde design and innovative approach to hospitality.

At Saint Kate, guests are immersed in an inspirational atmosphere that celebrates and showcases local and global artistic talent, with galleries, studios, and theatre spaces situated throughout the property. Comfortably appointed rooms, top-notch dining options, and exceptional service heighten the guest experience while the hotel's convenient location allows easy access to Milwaukee's abundance of attractions, events, and nightspots. Saint Kate is truly an oasis for the curious, the creative, and the discerning traveler seeking an unforgettable stay.



Milwaukee, WI, Our Host City

Milwaukee, often referred to as the "City of Festivals," presents itself as the ideal destination for conferencegoers seeking a dynamic, culturally diverse, and accessible location. Nestled along the stunning shores of Lake Michigan, Milwaukee boasts a thriving arts scene, historic landmarks, and world-class museums, offering an unmatched mix of learning and leisure opportunities. The city excels in its capacity to host a wide variety of events, thanks to its state-of-the-art facilities, rich infrastructure, and a warm Midwestern charm that is evident in its hospitable atmosphere. With an abundance of delectable dining options, a vibrant nightlife, and a burgeoning craft beer scene, Milwaukee provides countless ways to unwind and network after conference sessions. In addition, the city's efficient public transportation system and an expanding list of accommodations for every budget make Milwaukee an attractive, hassle-free, and unforgettable destination for conference attendees.



INVESTMENT

SPONSORSHIP PACKAGES

PACKAGE DETAILS	BRONZE	SILVER	GOLD
Package Investment	\$5,000	\$10,000	\$15,000
Number of Tickets to Conference + Dinner	4	8	12
Uplifting Impact Assessment	✓	✓	✓
1:1 Coaching Sessions	✓	✓	✓
Website, Social Media and Email Promotion	✓	✓	✓
Invitations to Builder Banquet: A Celebration of Hope and Leadership	✓	✓	✓
Product Placement in Conference Welcome Packages	✓	✓	✓
Group Summit Debrief Session		✓	✓
Branded Event Sessions (Welcome/Lunch/Dinner)		✓	✓
Prominent Logo Placement at the Venue			✓
Featured Guest Slot			✓
PACKAGE VALUE	\$7,000	\$17,000	\$27,000

Individual Conference Ticket \$850

Included in your Shaping the Future ticket:

- **Access to conference sessions:** This includes keynotes, panel discussions, and workshops on March 5–6th.
- **Networking Opportunities:** Mingle and establish connections with other attendees, sponsors, speakers, and exhibitors.
- **Materials and Handouts:** Conference materials and hand-outs from presentations or workshops, including supplemental tools, reflection resources, and learning tools
- **Food and Drinks:** Breakfast/Lunch March 5 & 6th
- **Certificate of Participation:** Get a professional badge that you can share

PLEASE NOTE THAT GROUPS OF 5+ GET A 10% DISCOUNT!

DEANNA SINGH

OUR HOSTS

JUSTIN PONDER

Deanna is a sought-after speaker and trailblazer in the field of social change. As an expert social entrepreneur, she is obsessed with making the world a better place, and she will build or break systems to create positive change. Her dynamic presence and inspirational messages impact over 100,000 people annually. She is an award-winning author, educator, business leader, and social justice champion who has dedicated her life to creating positive change.

As the Founder and Chief Change Agent of Flying Elephant, Deanna leads four social ventures that work towards creating a more equitable society. From DEI and healthcare to children's literature and leadership, these ventures are united in their mission to shift power to marginalized communities. Deanna's impact extends beyond her social ventures. She is the author of six books including *Actions Speak Louder* and *A Girl's Guide to Race & Inclusion* in partnership with American Girl.



Dr. Justin Ponder is a thought-leading Chief Information Officer at Uplifting Impact and a seasoned professor of Ethnic Studies, well-versed in inspiring organizational transformations. He leverages his expertise to foster inclusion within a wide variety of organizations globally. He also instructs an esteemed certificate program on diversity, equity, and inclusion as part of the University of Wisconsin School of Business and the Center for Professional and Executive Development.

With an impressive dossier with numerous academic publications, Justin doesn't limit himself to the theoretical realm. He is fervently dedicated to applying his knowledge to transform practical scenarios. His passion fuels his initiative as a prolific co-host of a globally recognized podcast that engages with DEI leaders worldwide. Sharing his invaluable insights, he also co-chairs the annual 'How to Be an Ally Virtual Summit' under the Uplifting Impact banner, shaping new allies around the world!



CONTACT US AT SUMMIT@UPLIFTINGIMPACT.COM